



A B I N F L A T A B L E S

Iammina

8 AL

SUPERLIGHT

Aluminum Tenders



S P E C S

Overall Length	: 8'5" / 2.56m	Number of Chambers	: 3	Shaft Length	: 15" / 38.1cm
Overall Beam	: 4'9" / 1.45m	Person Capacity	: 4	RDC Design Category	: C
Inside Length	: 5'10" / 1.79m	Weight	: 73lb / 33kg		
Inside Beam	: 2' / 0.62m	Recommended HP	: 4hp / 3.0kw		
Tube Diameter	: 16" / 0.40m	Maximum HP	: 6hp / 4.5kw		

S T A N D A R D
F E A T U R E S

- Deep "V" Marine Grade Aluminum Hull
- Heavy Duty Transom Knee
- Non - Skid Rubber Floor Panels
- Plastic External Transom Plate
- Aluminum Internal Transom Plate with Security Lip
- Aluminum Bow Eye
- 3 Aluminum Davit Lifting Points
- Deck Drain with Plug
- Orca(CSM) Five Layer Coated Fabric
- Push Push Plastic Non-Corrosive 2 Stage Inflation Valves
- Raised Single Rub Rail
- 1 Front & 2 Side Orca(CSM) Fabric Handles on Tubes
- 2 Inside Bow Single Orca(CSM) Fabric Handles on Tubes
- 2 Inside Stern Single Orca (CSM) Fabric Handles on Tubes
- Removable Rowing Seat
- Oarlock Bases
- Telescopic Oars with Aluminum Shaft
- Paddle Holders
- Hand Pump
- Maintenance Kit
- Owner's Manual
- 3 Layer Reinforced Seams
- Rubber Protector on Full Length of Keel

O P T I O N A L
F E A T U R E S

- Tube Chaps
- Boat Cover
- Chock Set
- Bow Step with Fold Down Stainless Steel cleat
- Lateral Fold Down Stainless Steel Cleat





A B I N F L A T A B L E S

Iammina

9 AL

SUPERLIGHT

Aluminum Tenders



S P E C S

Overall Length	: 9'1" / 2.76m	Number of Chambers	: 3	Shaft Length	: 15" / 38.1cm
Overall Beam	: 4'9" / 1.45m	Person Capacity	: 4	RDC Design Category	: C
Inside Length	: 6'3" / 1.90m	Weight	: 79lb / 36kg		
Inside Beam	: 2'2" / 0.66m	Recommended HP	: 8hp / 6.0kw		
Tube Diameter	: 16" / 0.40m	Maximum HP	: 10hp / 7.5kw		

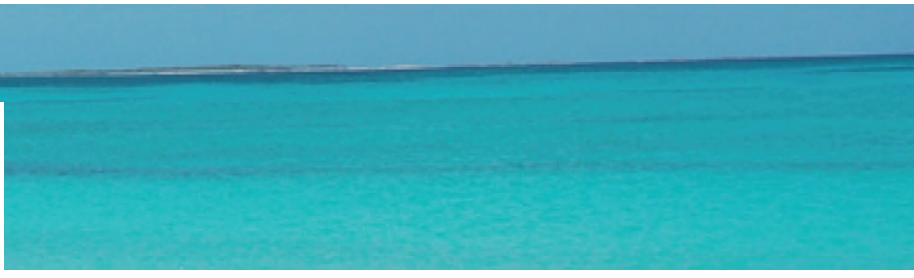
S T A N D A R D F E A T U R E S

- Deep "V" Marine Grade Aluminum Hull
- Heavy Duty Transom Knee
- Non - Skid Rubber Floor Panels
- Plastic External Transom Plate
- Aluminum Internal Transom Plate with Security Lip
- Aluminum Bow Eye
- 3-4 Aluminum Davit Lifting Points
- Deck Drain with Plug
- Orca(CSM) Five Layer Coated Fabric
- Push Push Plastic Non-Corrosive 2 Stage Inflation Valves
- Raised Single Rub Rail
- 1 Front & 2 Side Orca(CSM) Fabric Handles on Tubes
- 2 Inside Bow Sets of Double Orca(CSM) Fabric Handles on Tubes
- 2 Inside Stern Single Orca (CSM) Fabric Handles on Tubes
- Removable Rowing Seat
- Oarlock Bases
- Telescopic Oars with Aluminum Shaft
- Paddle Holders
- Hand Pump
- Maintenance Kit
- Owner's Manual
- 3 Layer Reinforced Seams
- Rubber Protector on Full Length of Keel

O P T I O N A L F E A T U R E S

- Bow Locker/ Seat
- Tube Chaps
- Boat Cover
- Chock Set
- Bow Step with Fold Down Stainless Steel cleat
- Lateral Fold Down Stainless Steel Cleat





Iamina | **9.5AL SUPERLIGHT** | **Aluminum Tenders**



S P E C S	Overall Length : 9'6" / 2.90m	Number of Chambers : 3	Shaft Length : 15" / 38.1cm
	Overall Beam : 5'6" / 1.68m	Person Capacity : 5	RDC Design Category : C
	Inside Length : 6'11" / 2.11m	Weight : 95lb / 43kg	
	Inside Beam : 2'6" / 0.76m	Recommended HP : 8hp / 6.0kw	
	Tube Diameter : 17" / 0.43m	Maximum HP : 15hp / 11.2kw	

S T A N D A R D F E A T U R E S	<ul style="list-style-type: none"> ■ Deep "V" Marine Grade Aluminum Hull ■ Stringer System Welded Under Aluminum Deck ■ Heavy Duty Transom Knee ■ Non - Skid Rubber Floor Panels ■ Plastic External Transom Plate ■ Aluminum Internal Transom Plate with Security Lip ■ Aluminum Bow Eye ■ 3-4 Aluminum Davit Lifting Points 	<ul style="list-style-type: none"> ■ Aluminum Transom Tie Down & Towing Rings ■ Deck Drain with Plug ■ Orca(CSM) Five Layer Coated Fabric ■ Raised Single Rub Rail ■ Push Push Plastic Non-Corrosive 2 Stage Inflation Valves ■ 1 Front & 2 Side Orca(CSM) Fabric Handles on Tubes ■ 2 Inside Bow Sets of Double Orca(CSM) Fabric Handles on Tubes ■ 2 Inside Stern Single Orca (CSM) Fabric Handles on Tubes 	<ul style="list-style-type: none"> ■ Removable Rowing Seat ■ Oarlock Bases ■ Telescopic Oars with Aluminum Shaft ■ Paddle Holders ■ Hand Pump ■ Maintenance Kit ■ Owner's Manual ■ 3 Layer Reinforced Seams ■ Rubber Protector on Full Length of Keel
--	--	---	--

O P T I O N A L F E A T U R E S	<ul style="list-style-type: none"> ■ Tube Chaps ■ Boat Cover ■ Chock Set 	<ul style="list-style-type: none"> ■ Bow Step with Fold Down Stainless Steel Cleat ■ Bow Locker/ Seat ■ Lateral Fold Down Stainless Steel Cleat
--	---	--



lammina | **10AL SUPERLIGHT** | **Aluminum Tenders**



S P E C S	Overall Length : 10'6" / 3.19m	Number of Chambers : 3	Shaft Length : 15" / 38.1cm
	Overall Beam : 5'6" / 1.68m	Person Capacity : 5	RDC Design Category : C
	Inside Length : 7'6" / 2.30m	Weight : 117lb / 53kg	
	Inside Beam : 2'8" / 0.81m	Recommended HP : 10hp / 7.5kw	
	Tube Diameter : 17" / 0.43m	Maximum HP : 20hp / 14.9kw	

STANDARD FEATURES	<ul style="list-style-type: none"> ■ Deep "V" Marine Grade Aluminum Hull ■ Stringer System Welded Under Aluminum Deck ■ Heavy Duty Transom Knee ■ Non - Skid Rubber Floor Panels ■ Plastic External Transom Plate ■ Aluminum Internal Transom Plate with Security Lip ■ Aluminum Bow Eye ■ 3-4 Aluminum Davit Lifting Points 	<ul style="list-style-type: none"> ■ Aluminum Transom Tie Down & Towing Rings ■ Deck Drain with Plug ■ Orca(CSM) Five Layer Coated Fabric ■ Raised Single Rub Rail ■ Push Push Plastic Non-Corrosive 2 Stage Inflation Valves ■ 1 Front & 2 Side Orca(CSM) Fabric Handles on Tubes ■ 2 Inside Bow Sets of Double Orca(CSM) Fabric Handles on Tubes ■ 2 Inside Stern Double Orca (CSM) Fabric Handles on Tubes 	<ul style="list-style-type: none"> ■ Removable Rowing Seat ■ Oarlock Bases ■ Telescopic Oars with Aluminum Shaft ■ Paddle Holders ■ Hand Pump ■ Maintenance Kit ■ Owner's Manual ■ 3 Layer Reinforced Seams ■ Rubber Protector on Full Length of Keel
--------------------------	--	---	--

OPTIONAL FEATURES	<ul style="list-style-type: none"> ■ Tube Chaps ■ Boat Cover ■ Chock Set ■ Bow Step with Fold Down Stainless Steel Cleat ■ Lateral Fold Down Stainless Steel Cleat ■ Removable Stern Seat 	<ul style="list-style-type: none"> ■ Fiberglass Console ■ One Person Jockey Seat ■ Two Person Jockey Seat ■ Stainless Steel Helm Unit ■ Bow Locker/ Seat ■ Bench Seat with Storage.
--------------------------	---	---





A B I N F L A T A B L E S

Iammina

11AL SUPERLIGHT

Aluminum Tenders



S P E C S

Overall Length	: 11'6" / 3.50m	Number of Chambers	: 3	Shaft Length	: 20" / 50.8cm
Overall Beam	: 5'7" / 1.70m	Person Capacity	: 6	RDC Design Category	: C
Inside Length	: 8'6" / 2.60m	Weight	: 172lb / 78kg		
Inside Beam	: 2'8" / 0.81m	Recommended HP	: 20hp / 14.9kw		
Tube Diameter	: 17" / 0.43m	Maximum HP	: 30hp / 22.4kw		

S T A N D A R D F E A T U R E S

- Deep "V" Marine Grade Aluminum Hull
- Stringer System Welded Under Aluminum Deck
- Heavy Duty Transom Knee
- Non - Skid Rubber Floor Panels
- Plastic External Transom Plate
- Aluminum Internal Transom Plate
- Aluminum Bow Eye
- 3-4 Aluminum Davit Lifting Points
- Aluminum Transom Tie Down & Towing Rings
- Aluminum Bow Tie Down & Towing Rings
- Deck Drain with Plug
- Orca(CSM) Five Layer Coated Fabric
- Raised Single Rub Rail
- Push Push Plastic Non-Corrosive 2 Stage Inflation Valves
- 1 Front & 2 Side Orca(CSM) Fabric Handles on Tubes
- 2 Inside Bow Sets of Double Orca(CSM) Fabric Handles on Tubes
- 2 Inside Stern Single Orca (CSM) Fabric Handles on Tube
- Removable Stern Seat
- Paddles with Aluminum Shaft
- Paddle Holders
- Hand Pump
- Maintenance Kit
- Owner's Manual
- 3 Layer Reinforced Seams
- Rubber Protector on Full Length of Keel

O P T I O N A L F E A T U R E S

- Tube Chaps
- Boat Cover
- Chock Set
- Bow Step with Fold Down Stainless Steel Cleat
- Lateral Fold Down Stainless Steel Cleat
- Removable Rowing Seat
- Fiberglass Console with Forward Seat
- Fiberglass Console
- Bench Seat with Storage
- One Person Jockey Seat
- Two Person Jockey Seat
- Stainless Steel Helm Unit
- Bow Locker/ Seat



www.abinflatables.com



A B I N F L A T A B L E S

Iammina

12AL SUPERLIGHT

Aluminum Tenders



S P E C S

Overall Length	: 12' / 3.66m	Number of Chambers	: 3	Shaft Length	: 20" / 50.8cm
Overall Beam	: 6'1" / 1.85m	Person Capacity	: 6	RDC Design Category	: C
Inside Length	: 8'10" / 2.70m	Weight	: 198lb / 90kg		
Inside Beam	: 2'11" / 0.89m	Recommended HP	: 25hp / 18.7kw		
Tube Diameter	: 18" / 0.46m	Maximum HP	: 30hp / 22.4kw		

S T A N D A R D
F E A T U R E S

- Deep "V" Marine Grade Aluminum Hull
- Stringer System Welded Under Aluminum Deck
- Heavy Duty Transom Knee
- Non - Skid Rubber Floor Panels
- Plastic External Transom Plate
- Aluminum Internal Transom Plate
- Aluminum Bow Eye
- 3-4 Aluminum Davit Lifting Points
- Aluminum Transom Tie Down & Towing Rings
- Aluminum Bow Tie Down & Towing Rings
- Deck Drain with Plug
- Orca(CSM) Five Layer Coated Fabric
- Raised Double Rub Rail
- Push Push Plastic Non-Corrosive 2 Stage Inflation Valves
- 1 Front & 2 Side Orca(CSM) Fabric Handles on Tubes
- 2 Inside Bow Sets of Double Orca(CSM) Fabric Handles on Tubes
- 2 Inside Stern Single Orca (CSM) Fabric Handles on Tubes
- Removable Stern Seat
- Paddles with Aluminum Shaft
- Paddle Holders
- Hand Pump
- Maintenance Kit
- Owner's Manual
- 3 Layer Reinforced Seams
- Rubber Protector on Full Length of Keel

O P T I O N A L
F E A T U R E S

- Tube Chaps
- Boat Cover
- Chock Set
- Bow Step with Fold Down Stainless Steel Cleat
- Lateral Fold Down Stainless Steel Cleat
- Removable Rowing Seat
- Fiberglass Console with Forward Seat
- Fiberglass Console
- Bench Seat with Storage
- One Person Jockey Seat
- Two Person Jockey Seat
- Stainless Steel Helm Unit
- Bow Locker/ Seat





A B I N F L A T A B L E S

Iammina

13AL SUPERLIGHT

Aluminum Tenders



S P E C S

Overall Length	: 13' / 3.96m	Number of Chambers	: 3	Shaft Length	: 20" / 50.8cm
Overall Beam	: 6'7" / 2.00m	Person Capacity	: 7	RDC Design Category	: C
Inside Length	: 9'10" / 3.00m	Weight	: 220lb/100kg		
Inside Beam	: 3'3" / 0.99m	Recommended HP	: 30hp / 22.4kw		
Tube Diameter	: 18" / 0.46m	Maximum HP	: 40hp / 29.8kw		

S T A N D A R D
F E A T U R E S

- Deep "V" Marine Grade Aluminum Hull
- Stringer System Welded Under Aluminum Deck
- Heavy Duty Transom Knee
- Non - Skid Rubber Floor Panels
- Plastic External Transom Plate
- Aluminum Internal Transom Plate
- Aluminum Bow Eye
- 3-4 Aluminum Davit Lifting Points
- Aluminum Transom Tie Down & Towing Rings
- Aluminum Bow Tie Down & Towing Rings
- Deck Drain with Plug
- Orca(CSM) Five Layer Coated Fabric
- Raised Double Rub Rail
- Push Push Plastic Non-Corrosive 2 Stage Inflation Valves
- 1 Front & 4 Side Orca(CSM) Fabric Handles on Tubes
- 2 Inside Bow Sets of Double Orca(CSM) Fabric Handles on Tubes
- 2 Inside Stern Double Orca (CSM) Fabric Handles on Tubes
- Paddles with Aluminum Shaft
- Paddle Holders
- Hand Pump
- Maintenance Kit
- Owner's Manual
- 3 Layer Reinforced Seams
- Rubber Protector on Full Length of Keel

O P T I O N A L
F E A T U R E S

- Tube Chaps
- Boat Cover
- Chock Set
- Bow Step with Fold Down Stainless Steel Cleat
- Lateral Fold Down Stainless Steel Cleat
- Fiberglass Console
- Fiberglass Console with Forward Seat
- Bench Seat with Storage
- One Person Jockey Seat
- Two Person Jockey Seat
- Stainless Steel Helm Unit
- Bow Locker/ Seat





A B I N F L A T A B L E S

Iammina

14AL SUPERLIGHT

Aluminum Tenders



S P E C S

Overall Length	: 14' / 4.27m	Number of Chambers	: 4	Shaft Length	: 20" / 50.8cm
Overall Beam	: 6'7" / 2.00m	Person Capacity	: 8	RDC Design Category	: C
Inside Length	: 10'10" / 3.30m	Weight	: 246lb / 112kg		
Inside Beam	: 3'3" / 0.99m	Recommended HP	: 40hp / 29.8kw		
Tube Diameter	: 19" / 0.48m	Maximum HP	: 50hp / 37.3kw		

S T A N D A R D F E A T U R E S

- Deep "V" Marine Grade Aluminum Hull
- Stringer System Welded Under Aluminum Deck
- Heavy Duty Transom Knee
- Non - Skid Rubber Floor Panels
- Plastic External Transom Plate
- Aluminum Internal Transom Plate
- Aluminum Bow Eye
- 3-4 Aluminum Davit Lifting Points
- Aluminum Transom Tie Down & Towing Rings
- Aluminum Bow Tie Down & Towing Rings
- Deck Drain with Plug
- Orca(CSM) Five Layer Coated Fabric
- Raised Double Rub Rail
- Push Push Plastic Non-Corrosive 2 Stage Inflation Valves
- 1 Front & 4 Side Orca(CSM) Fabric Handles on Tubes
- 2 Inside Bow Sets of Triple Orca(CSM) Fabric Handles on Tubes
- 2 Inside Stern Double Orca (CSM) Fabric Handles on Tubes
- Paddles with Aluminum Shaft
- Paddle Holders
- Hand Pump
- Maintenance Kit
- Owner's Manual
- 3 Layer Reinforced Seams
- Rubber Protector on Full Length of Keel

O P T I O N A L F E A T U R E S

- Tube Chaps
- Boat Cover
- Chock Set
- Bow Step with Fold Down Stainless Steel Cleat
- Lateral Fold Down Stainless Steel Cleat
- Fiberglass Console
- Fiberglass Console with Forward Seat
- Bench Seat with Storage
- One Person Jockey Seat
- Two Person Jockey Seat
- Stainless Steel Helm Unit
- Bow Locker/ Seat





A B I N F L A T A B L E S

Iammina

15AL SUPERLIGHT

Aluminum Tenders



S P E C S

Overall Length : 15' / 4.57m	Number of Chambers : 5	Shaft Length : 20" / 50.8cm
Overall Beam : 6'9" / 2.06m	Person Capacity : 9	RDC Design Category : C
Inside Length : 11'8" / 3.55m	Weight : 326lb / 148kg	
Inside Beam : 3'4" / 1.03m	Recommended HP : 50hp / 37.3kw	
Tube Diameter : 19" / 0.48m	Maximum HP : 60hp / 44.8kw	

S T A N D A R D
F E A T U R E S

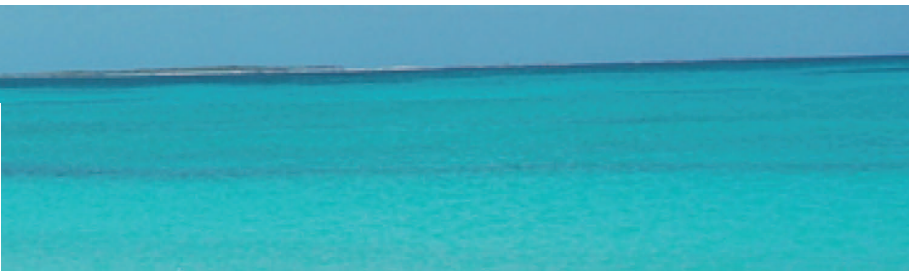
- Deep "V" Marine Grade Aluminum Hull
- Stringer System Welded Under Aluminum Deck
- Heavy Duty Transom Knee
- Non - Skid Rubber Floor Panels
- Plastic External Transom Plate
- Aluminum Internal Transom Plate
- Aluminum Bow Eye
- 3-4 Aluminum Davit Lifting Points
- Aluminum Transom Tie Down & Towing Rings
- Aluminum Bow Tie Down & Towing Rings
- Deck Drain with Plug
- Orca(CSM) Five Layer Coated Fabric
- Raised Double Rub Rail
- Push Push Plastic Non-Corrosive 2 Stage Inflation Valves
- 1 Front & 4 Side Orca(CSM) Fabric Handles on Tubes
- 2 Inside Bow Sets of Quadruple Orca(CSM) Fabric Handles on Tubes
- 2 Inside Stern Double Orca (CSM) Fabric Handles on Tubes
- Paddles with Aluminum Shaft
- Paddle Holders
- Hand Pump
- Maintenance Kit
- Owner's Manual
- 3 Layer Reinforced Seams
- Rubber Protector on Full Length of Keel

O P T I O N A L
F E A T U R E S

- Tube Chaps
- Boat Cover
- Chock Set
- Bow Step with Fold Down Stainless Steel Cleat
- Lateral Fold Down Stainless Steel Cleat
- Fiberglass Console
- Fiberglass Console with Forward Seat
- Bench Seat with Storage
- One Person Jockey Seat
- Two Person Jockey Seat
- Stainless Steel Helm Unit
- Bow Locker/ Seat



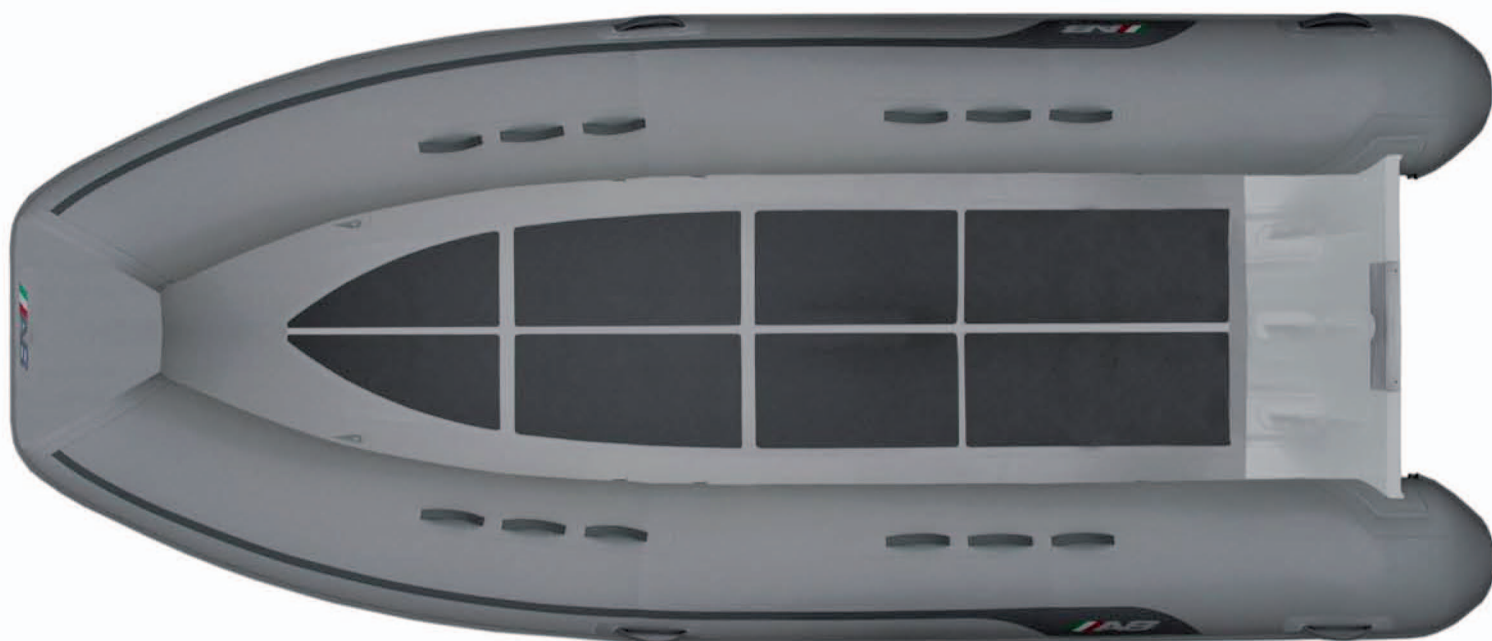
www.abinflatables.com



lammina

16AL SUPERLIGHT

Aluminum Tenders



S P E C S	Overall Length : 16' / 4.88m	Number of Chambers : 5	Shaft Length : 20" / 50.8cm
	Overall Beam : 7' / 2.14m	Person Capacity : 10	RDC Design Category : C
	Inside Length : 12'8" / 3.85m	Weight : 409lb / 186kg	
	Inside Beam : 3'6" / 1.08m	Recommended HP : 50hp / 37.3kw	
	Tube Diameter : 20" / 0.51m	Maximum HP : 60hp / 44.8kw	

S T A N D A R D F E A T U R E S	<ul style="list-style-type: none"> ■ Deep "V" Marine Grade Aluminum Hull ■ Stringer System Welded Under Aluminum Deck ■ Heavy Duty Transom Knee ■ Non - Skid Rubber Floor Panels ■ Plastic External Transom Plate ■ Aluminum Internal Transom Plate ■ Aluminum Bow Eye ■ 3-4 Aluminum Davit Lifting Points ■ Aluminum Transom Tie Down & Towing Rings 	<ul style="list-style-type: none"> ■ Aluminum Bow Tie Down & Towing Rings ■ Deck Drain with Plug ■ Orca(CSM) Five Layer Coated Fabric ■ Raised Double Rub Rail ■ Push Push Plastic Non-Corrosive 2 Stage Inflation Valves ■ 1 Front & 4 Side Orca(CSM) Fabric Handles on Tubes ■ 2 Inside Bow Sets of Quadruple Orca(CSM) Fabric Handles on Tubes ■ 2 Inside Stern Sets of Triple Orca (CSM) Fabric Handles on Tubes 	<ul style="list-style-type: none"> ■ Paddles with Aluminum Shaft ■ Paddle Holders ■ Hand Pump ■ Maintenance Kit ■ Owner's Manual ■ 3 Layer Reinforced Seams ■ Rubber Protector on Full Length of Keel
------------------------------------	--	--	--

O P T I O N A L F E A T U R E S	<ul style="list-style-type: none"> ■ Tube Chaps ■ Boat Cover ■ Chock Set ■ Bow Step with Fold Down Stainless Steel Cleat ■ Lateral Fold Down Stainless Steel Cleat ■ Fiberglass Console ■ Fiberglass Console with Forward Seat 	<ul style="list-style-type: none"> ■ Bench Seat with Storage ■ One Person Jockey Seat ■ Two Person Jockey Seat ■ Stainless Steel Helm Unit ■ Bow Locker/ Seat
------------------------------------	---	--

