



Iammina | **7.5UL** | **Ultra Light Aluminum Tenders**



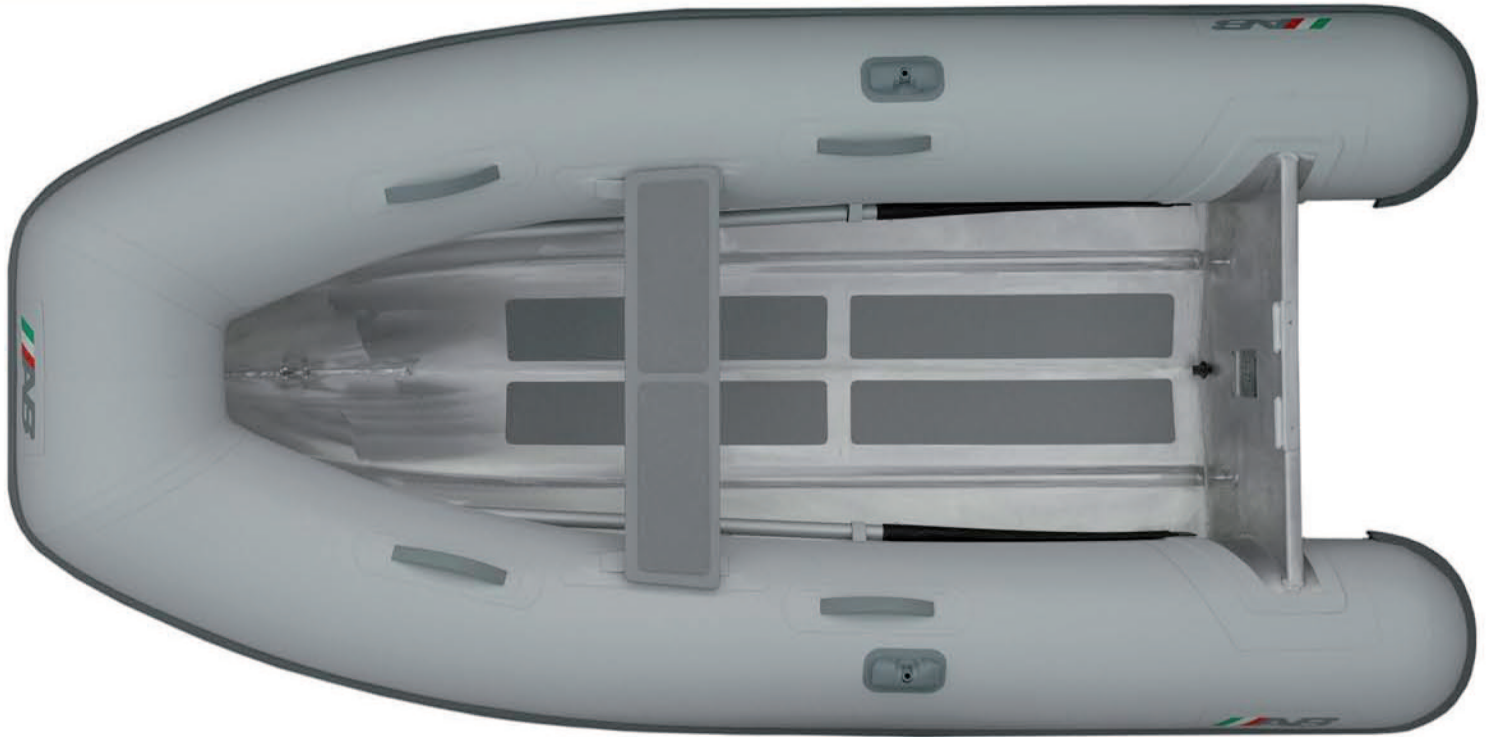
S P E C S	Overall Length	: 7'10" / 2.39m	Number of Chambers	: 2	Shaft Length	: 15" / 38.1cm
	Overall Beam	: 4'11" / 1.50m	Person Capacity	: 3	RDC Design Category	: C
	Inside Length	: 5'5" / 1.65m	Weight	: 66lb / 30kg		
	Inside Beam	: 2'2" / 0.66m	Recommended HP	: 3hp / 2.2kw		
	Tube Diameter	: 16" / 0.40m	Maximum HP	: 4hp / 2.9kw		

S T A N D A R D F E A T U R E S	<ul style="list-style-type: none"> ■ Shallow "V" Marine Grade Aluminum Hull ■ Non-Skid Rubber Floor Panels ■ Plastic External Transom Plate ■ Aluminum Internal Transom Plate With Security Lip ■ Aluminum Bow Eye ■ 3 Aluminum Davit Lifting Points ■ Aluminum Bow Towing Rings ■ Deck Drain with Plug ■ Orca (CSM) Five Layer Coated Fabric 	<ul style="list-style-type: none"> ■ Raised Single Rub Rail ■ Push Push Plastic Non-Corrosive 2 Stage Inflation Valves ■ 1 Front Orca (CSM) Fabric Handles on Tubes ■ 2 Inside Bow Single Orca (CSM) Fabric Handles on Tubes ■ 2 Inside Stern Single Orca (CSM) Fabric Handles on Tubes ■ Removable Rowing Seat ■ Oarlock Bases ■ Telescopic Oars with Aluminum Shaft 	<ul style="list-style-type: none"> ■ Paddle Holders ■ Hand Pump ■ Maintenance Kit ■ Owner's Manual ■ 3 Layer Reinforced Seams
--	--	---	--

O P T I O N A L F E A T U R E S	<ul style="list-style-type: none"> ■ Tube Chaps ■ Boat Cover ■ Chock Set
--	---



lammina | **8UL** | **Ultra Light Aluminum Tenders**



S P E C S	Overall Length	: 8' 5" / 2.56m	Number of Chambers	: 2	Shaft Length	: 15" / 38.1cm
	Overall Beam	: 4' 11" / 1.50m	Person Capacity	: 4	RDC Design Category	: C
	Inside Length	: 5' 10" / 1.79m	Weight	: 68lb / 31kg		
	Inside Beam	: 2' 2" / 0.66m	Recommended HP	: 4hp / 3.0kw		
	Tube Diameter	: 16" / 0.40m	Maximum HP	: 5hp / 3.8kw		

S T A N D A R D F E A T U R E S	<ul style="list-style-type: none"> ■ Shallow "V" Marine Grade Aluminum Hull ■ Non-Skid Rubber Floor Panels ■ Plastic External Transom Plate ■ Aluminum Internal Transom Plate With Security Lip ■ Aluminum Bow Eye ■ 3 Aluminum Davit Lifting Points ■ Aluminum Bow Towing Rings ■ Deck Drain with Plug ■ Orca (CSM) Five Layer Coated Fabric 	<ul style="list-style-type: none"> ■ Raised Single Rub Rail ■ Push Push Plastic Non-Corrosive 2 Stage Inflation Valves ■ 1 Front Orca (CSM) Fabric Handles on Tubes ■ 2 Inside Bow Single Orca (CSM) Fabric Handles on Tubes ■ 2 Inside Stern Single Orca (CSM) Fabric Handles on Tubes ■ Removable Rowing Seat ■ Oarlock Bases ■ Telescopic Oars with Aluminum Shaft 	<ul style="list-style-type: none"> ■ Paddle Holders ■ Hand Pump ■ Maintenance Kit ■ Owner's Manual ■ 3 Layer Reinforced Seams
--	--	---	--

O P T I O N A L F E A T U R E S	<ul style="list-style-type: none"> ■ Tube Chaps ■ Boat Cover ■ Chock Set
--	---



Iammina | **9UL** | **Ultra Light Aluminum Tenders**



S P E C S	Overall Length : 9'1" / 2.76m	Number of Chambers : 2	Shaft Length : 15" / 38.1cm
	Overall Beam : 4'11" / 1.50m	Person Capacity : 4	RDC Design Category : C
	Inside Length : 6'3" / 1.90m	Weight : 75lb / 34kg	
	Inside Beam : 2'3" / 0.70m	Recommended HP : 6hp / 4.5kw	
	Tube Diameter :	Maximum HP : 8hp / 6.0kw	

S T A N D A R D F E A T U R E S	<ul style="list-style-type: none"> ■ Shallow "V" Marine Grade Aluminum Hull ■ Non-Skid Rubber Floor Panels ■ Plastic External Transom Plate ■ Aluminum Internal Transom Plate With Security Lip ■ Aluminum Bow Eye ■ 3 Aluminum Davit Lifting Points ■ Aluminum Bow Towing Rings ■ Deck Drain with Plug ■ Orca (CSM) Five Layer Coated Fabric 	<ul style="list-style-type: none"> ■ Raised Single Rub Rail ■ Push Push Plastic Non-Corrosive 2 Stage Inflation Valves ■ 1 Front Orca (CSM) Fabric Handles on Tubes ■ 2 Inside Bow Single Orca (CSM) Fabric Handles on Tubes ■ 2 Inside Stern Single Orca (CSM) Fabric Handles on Tubes ■ Removable Rowing Seat ■ Oarlock Bases ■ Telescopic Oars with Aluminum Shaft 	<ul style="list-style-type: none"> ■ Paddle Holders ■ Hand Pump ■ Maintenance Kit ■ Owner's Manual ■ 3 Layer Reinforced Seams
--	--	---	--

O P T I O N A L F E A T U R E S	<ul style="list-style-type: none"> ■ Tube Chaps ■ Boat Cover ■ Chock Set
--	---



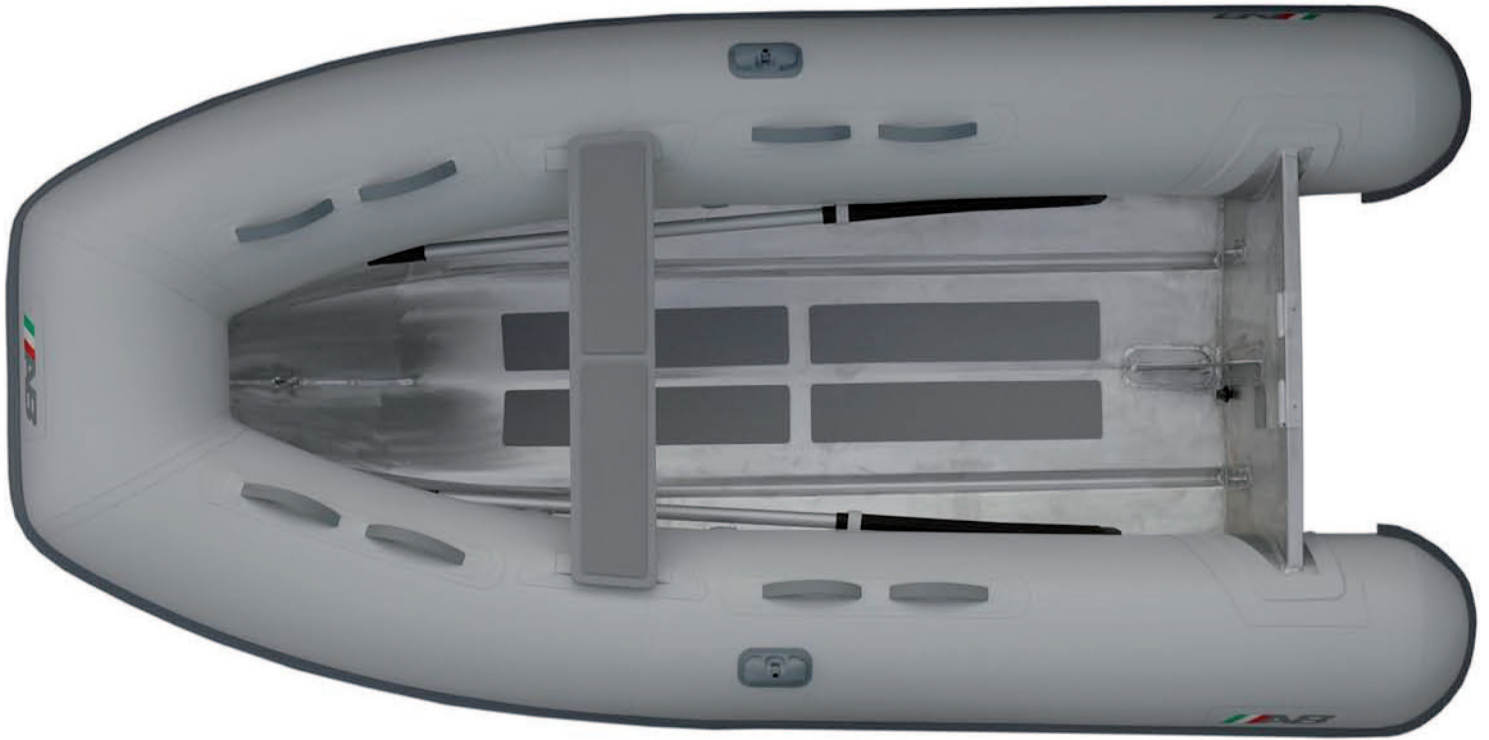


A B I N F L A T A B L E S

lammina

10UL

Ultra Light Aluminum Tenders



S P E C S

Overall Length	: 10' / 3.05m	Number of Chambers	: 3	Shaft Length	: 15" / 38.1cm
Overall Beam	: 5'6" / 1.68m	Person Capacity	: 5	RDC Design Category	: C
Inside Length	: 7'2" / 2.18m	Weight	: 95lb / 43kg		
Inside Beam	: 2'8" / 0.81m	Recommended HP	: 8hp / 6.0kw		
Tube Diameter	: 17" / 0.43m	Maximum HP	: 9.9hp / 7.4kw		

S T A N D A R D F E A T U R E S

- Shallow "V" Marine Grade Aluminum Hull
- Transom Knee
- Non-Skid Rubber Floor Panels
- Plastic External Transom Plate
- Aluminum Internal Transom Plate With Security Lip
- Aluminum Bow Eye
- 3 Aluminum Davit Lifting Points
- Aluminum Bow Towing Rings
- Deck Drain with Plug
- Orca (CSM) Five Layer Coated Fabric
- Raised Single Rub Rail
- Push Push Plastic Non-Corrosive 2 Stage Inflation Valves
- 1 Front Orca (CSM) Fabric Handles on Tubes
- 2 Inside Bow Sets of Double Orca (CSM) Fabric Handles on Tubes
- 2 Inside Stern Double Orca (CSM) Fabric Handles on Tubes
- Removable Rowing Seat
- Oarlock Bases
- Telescopic Oars with Aluminum Shaft
- Paddle Holders
- Hand Pump
- Maintenance Kit
- Owner's Manual
- 3 Layer Reinforced Seams

O P T I O N A L F E A T U R E S

- Tube Chaps
- Boat Cover
- Chock Set

